

Fig. 1. A., B. Lateral view of the female and male of *T. kutteri*. C., D. lateral view of the male and female of *T. schneideri* from Saas-Fee. (Hairs not drawn).

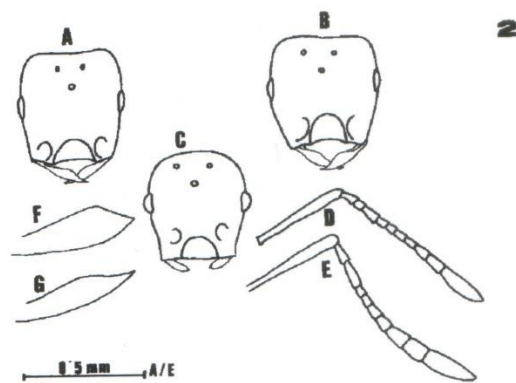


Fig. 2. A. Head of the female of *T. kutteri*; B. Head of the female of *T. schneideri*; C. head of the male of *T. kutteri*; D., E. Antennae of the females of *T. schneideri* and *T. kutteri*, respectively; F., G. mandibles of the males of *T. kutteri* and *T. schneideri*, respectively. (All the specimens of *T. schneideri* from Saas-Fee).