

Fig. 3. Sagita, volsella and subgenital plate of *T. kutteri* (B., D., E.) and *T. schneideri* (A., C., F.) from Saas-Fee.

Figs. 1-3: from Tinaut, A., 1990; Spixiana.

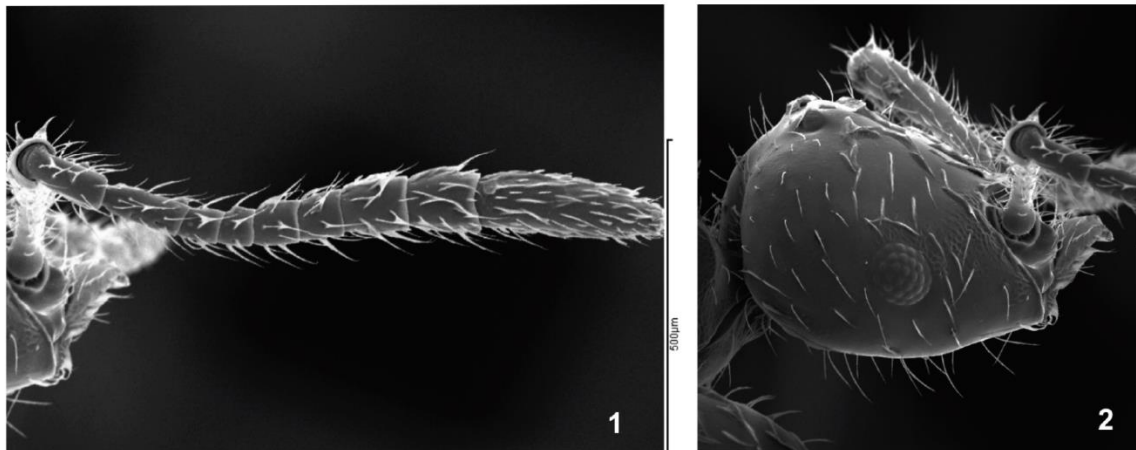


Fig. 1. Detalle de una antena usando el microscopio electrónico de barrido. Detail of an antenna using the scanning electron microscope (SEM). Fig. 2. Vista lateral de la cabeza de *T. kutteri* (SEM). Side view of the head of *T. kutteri* (SEM).

Figs. 1-2: from Reyes López, J., Benavente Martínez, A., 2011; Sociedad Entomológica Aragonesa.