

Figs. 6 - 7: Male of *Teleutomymex seiferti* sp.n., frontal (6) and lateral view (7).

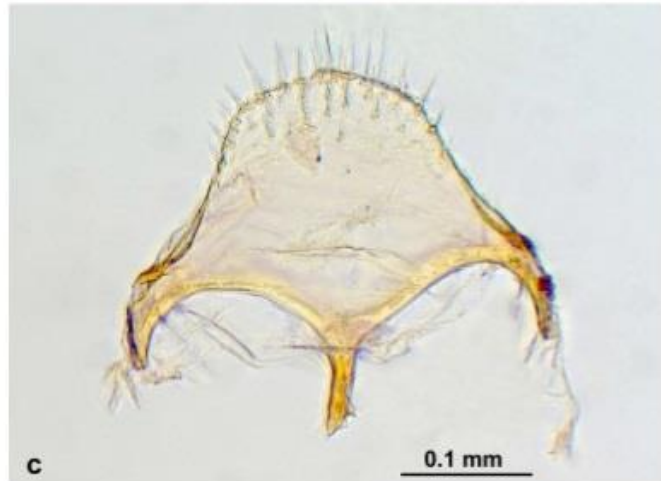


Fig. 8: Male genitalia of *Teleutomymex seiferti* sp.n. (a) Sagitta; (b) volsella; (c) subgenital plate.

Figs. 6-8: from Kiran, K., Karaman, C., Lapeva-Gjonova, A., Aksoy, V., 2017; Myrmecological News.

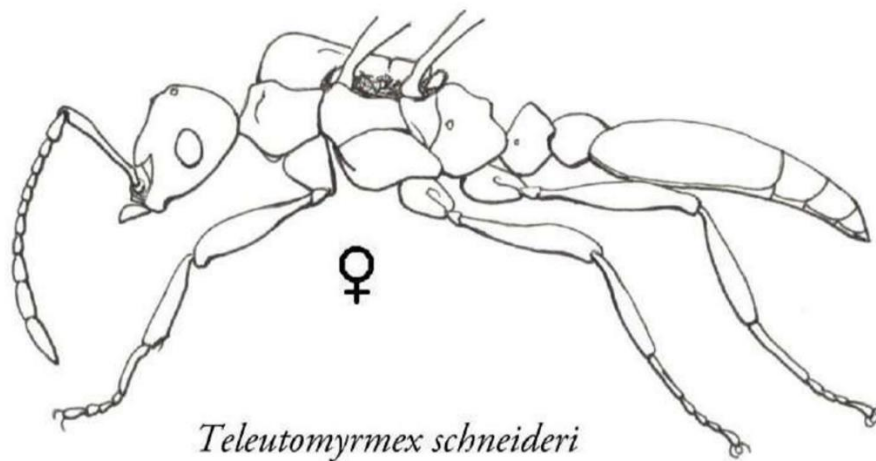


Fig.: from García, F., 2019; LaMarabunta digital, Nueva Edición.

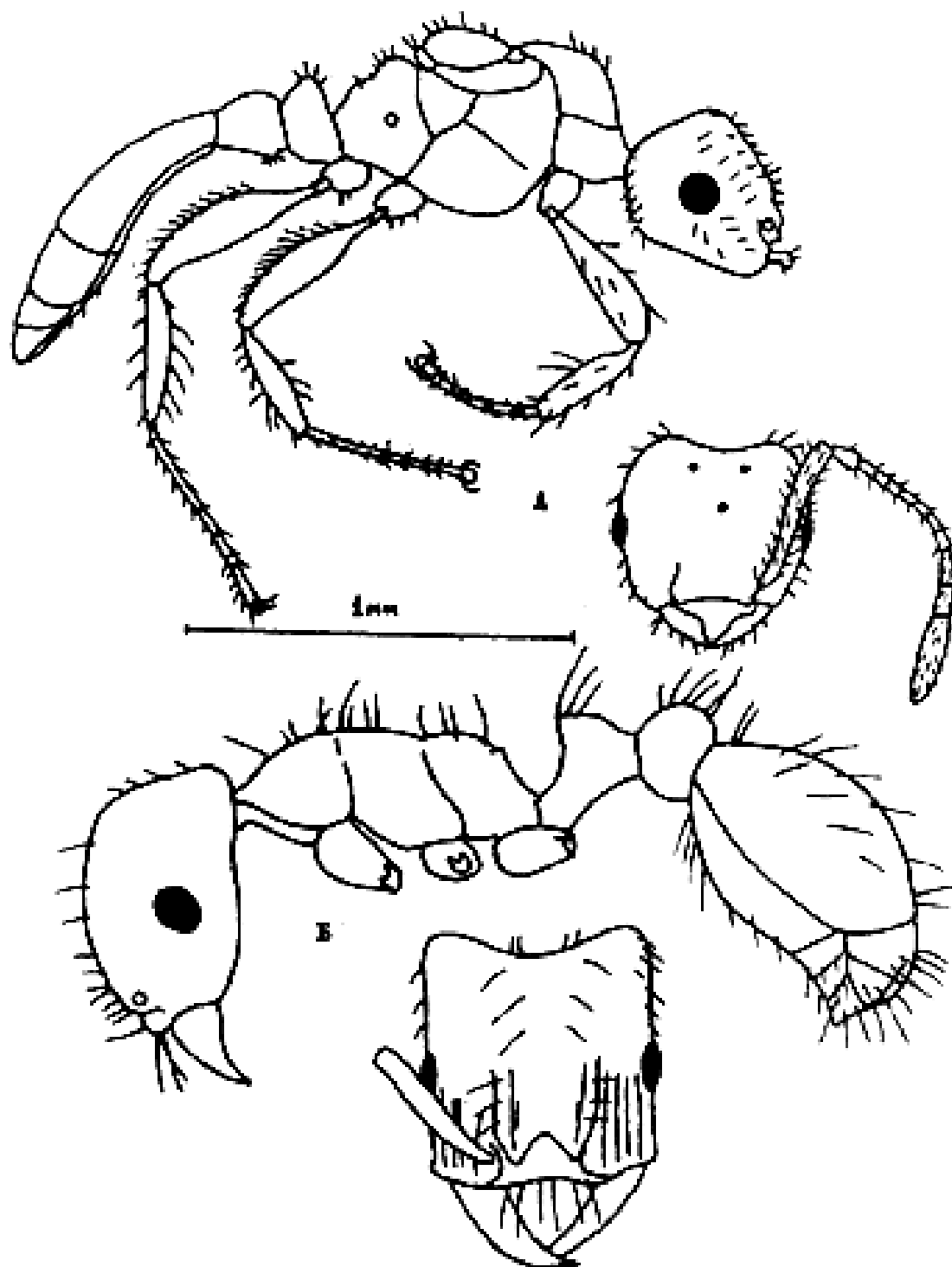


Fig. 22, A = *Teleutomymex schneideri* female, B = *Strongylognathus testaceus* worker.

Fig. 22: from Dlussky, G. M., Soyunov, O. S., Zabelin, S. I., 1990 ["1989"]; Ashkabad, Ylym Press.